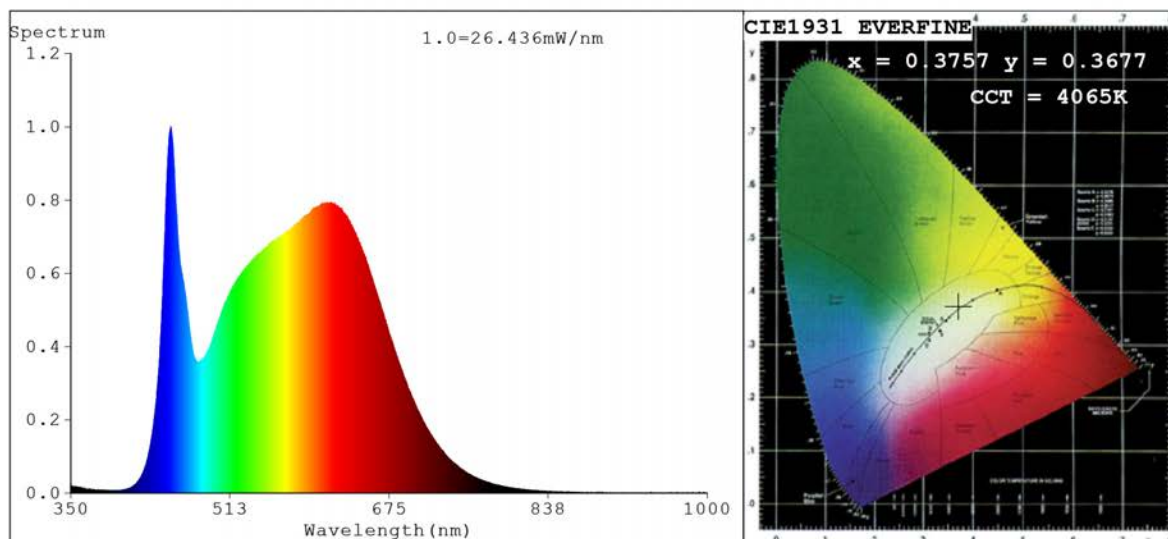


## Spectrum Test Report



### Color Parameters:

Chromaticity Coordinate:  $x=0.3757$   $y=0.3677$   $u'=0.2256$   $v'=0.4968$   
 CCT=4065K (Duv=-0.0029) Dominant WL:Ld =580.7nm Purity=23.1%  
 Ratio:R=19.9% G=75.7% B=4.5%;; Peak WL:Lp=452.2nm FWHM=25.8nm  
 Render Index:Ra=94.2 CRI=91.4 TM30:Rf=91 Rg=100  
 R1 =95 R2 =98 R3 =97 R4 =94 R5 =94 R6 =94 R7 =94  
 R8 =88 R9 =72 R10=92 R11=94 R12=74 R13=96 R14=98 R15=94

### Photo Parameters:

Flux = 1286 lm Eff. : 106.63 lm/W Fe = 4.514 W

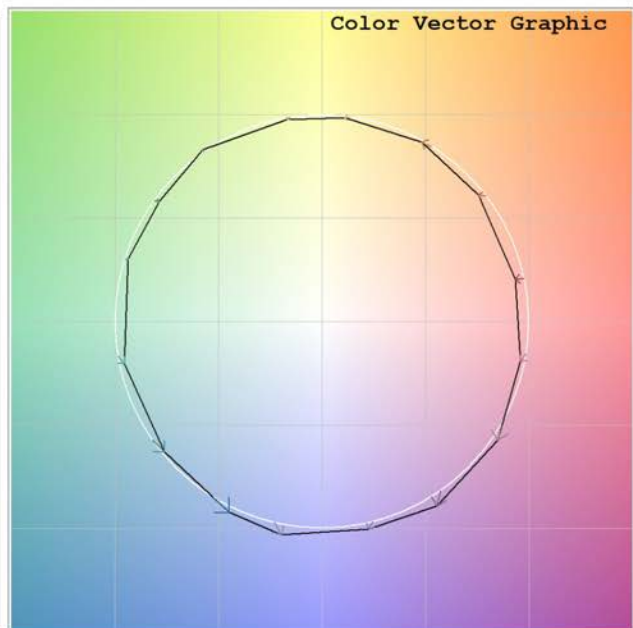
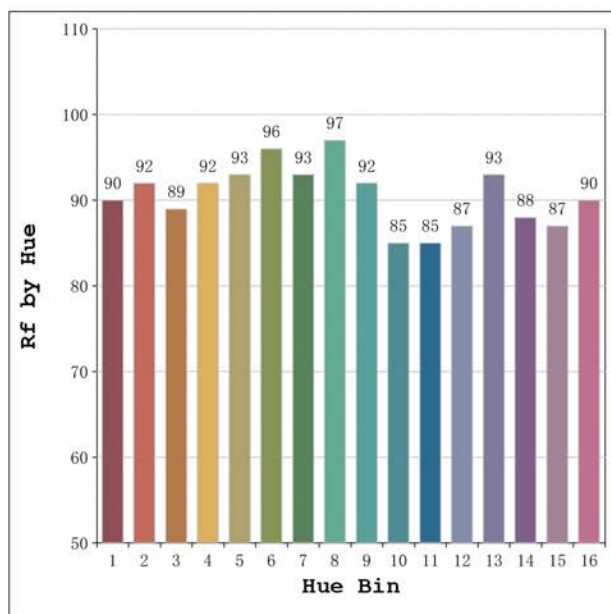
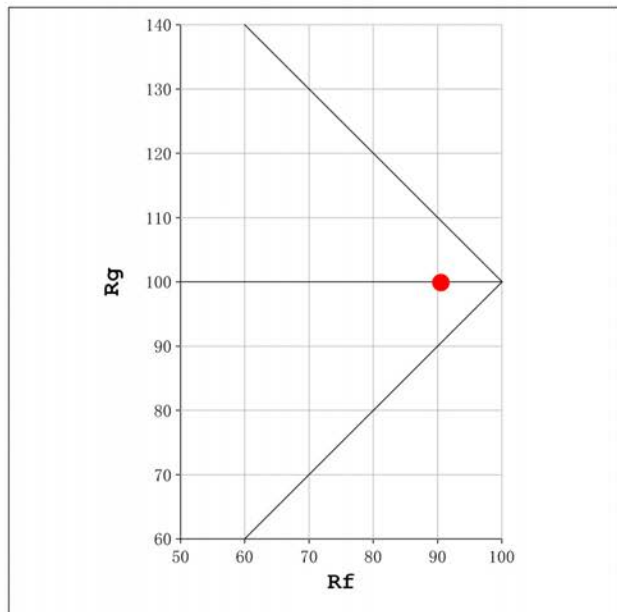
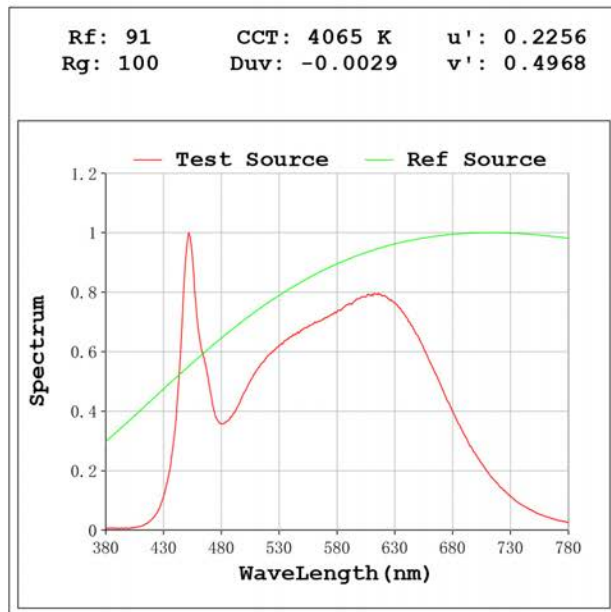
### Electrical parameters:

V = 23.998 V I = 0.5027 A P = 12.06 W PF = 1.000

Status: Integral T = 1000 ms Ip = 41453 (63%)

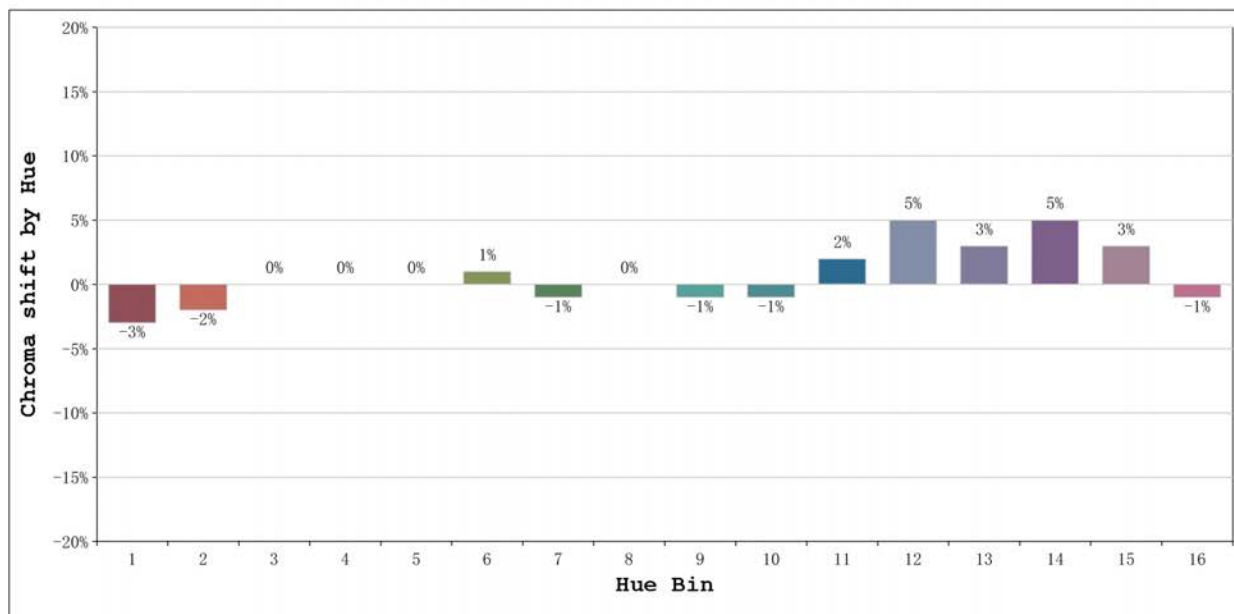
Model:Ecoled Cies pro 4000K  
 Tester:Sergio Carneros  
 Temperature:25Deg  
 Manufacturer:Luz Negra S.L.

Number: 32.087  
 Date:2024-10-28 11:57:41  
 Humidity:57%  
 Remarks:100cm de tira flexible



Model:Ecoled Cies pro 4000K  
 Tester:Sergio Carneros  
 Temperature:25Deg  
 Manufacturer:Luz Negra S.L.

Number: 32.087  
 Date:2024-10-28 11:57:41  
 Humidity:57%  
 Remarks:100cm de tira flexible



			Graphic shift(%)	
Hue Bin	Hue Angle	Rf	Chroma	Hue
1	0.0° - 22.5°	90	-3	0
2	22.5° - 45.0°	92	-2	2
3	45.0° - 67.5°	89	0	5
4	67.5° - 90.0°	92	0	2
5	90.0° - 112.5°	93	0	2
6	112.5° - 135.0°	96	1	0
7	135.0° - 157.5°	93	-1	0
8	157.5° - 180.0°	97	0	0
9	180.0° - 202.5°	92	-1	4
10	202.5° - 225.0°	85	-1	8
11	225.0° - 247.5°	85	2	11
12	247.5° - 270.0°	87	5	4
13	270.0° - 292.5°	93	3	-2
14	292.5° - 315.0°	88	5	-5
15	315.0° - 337.5°	87	3	-7
16	337.5° - 360.0°	90	-1	-3

Model:Ecoled Cies pro 4000K  
 Tester:Sergio Carneros  
 Temperature:25Deg  
 Manufacturer:Luz Negra S.L.

Number: 32.087  
 Date:2024-10-28 11:57:41  
 Humidity:57%  
 Remarks:100cm de tira flexible